

White Center Community Priorities

We surveyed **432 adults**
and **158 youth**.

Adult Respondents



**79% live in
White Center**



**98% shop, eat, or
play in White Center**



**29% work in
White Center**



**52% speak a
language other
than English**



**66% identify
as people of
color**



**38% have a
child age
zero to 18**



Youth Respondents



**84% go to a
neighborhood school
in White Center**

*Mount View Elementary,
White Center Heights
Elementary, Cascade
Middle School, or
Evergreen High School
Campus*



**9% are in
grades 6-8**



**91% are in
grades 9-12**



**91% identify
as people of
color**



**59% speak a
language other
than English**



We asked adults...

What are top challenges in White Center?

(% Selecting Each Top Challenge)

What would make things better?

(Quotes from Community Members)

Economy



Not enough jobs
(35%)



Jobs don't pay well (31%)



Too hard to keep a small business running (14%)

"Improve the physical condition of the retail core"

"More jobs, higher pay"

"A feeling of safety and security when walking around downtown"

Housing



Cost of rent or mortgage (38%)



Homelessness (20%)



Cost of home repair (17%)

"Vouchers or funding that can maintain diversity in the face of eventual gentrification"

"Affordable home repair"

"Some type of rent control"

Health



Alcohol or drug abuse (49%)



Cost of healthy food (29%)



Cigarette or tobacco use (25%)

"Information and assistance in navigating health care system"

"Make it a more inviting place to walk"

"Mental health and substance abuse services"

"A gym facility"

Safety



Drug activity
(64%)



Burglary and robbery (50%)



Litter, trash, or dumping (39%)

"Community efforts to encourage safety through unifying the people of White Center"

"Faster respond from police"

"Need more police at night"

"More street lighting"

Civic Engagement



Language barriers limit civic engagement (41%)



Neighbors don't know each other (40%)



People from different cultures don't know each other (40%)

"More community meetings involving every race"

"Active encouragement and reaching out to those who may have language barriers"

"More community events"

Early Learning



Child care is too expensive (54%)



Child care is low quality (25%)



Too hard to find out what options exist (16%)

"Make it affordable for parents to put multiple kids in child care"

"Something that provides a bridge for families who are barely ineligible for subsidy, and can't afford private pay"

"More spots for children"

K-12 Education



Standards for students are too low (28%)



Students miss too much school (22%)



Teachers are not responsive to families (15%)

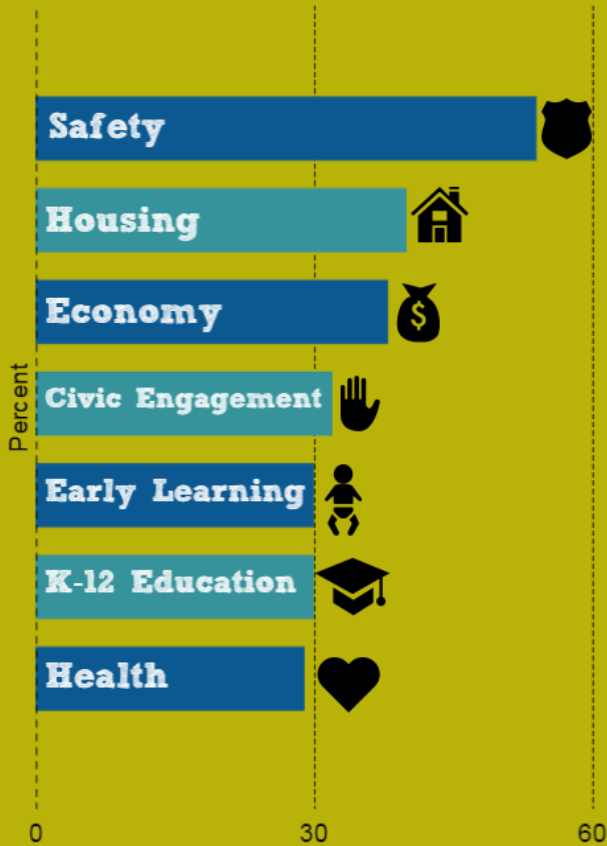
"Do even more to actively engage families"

"Need to focus more one on one for student the parent can't speak English"

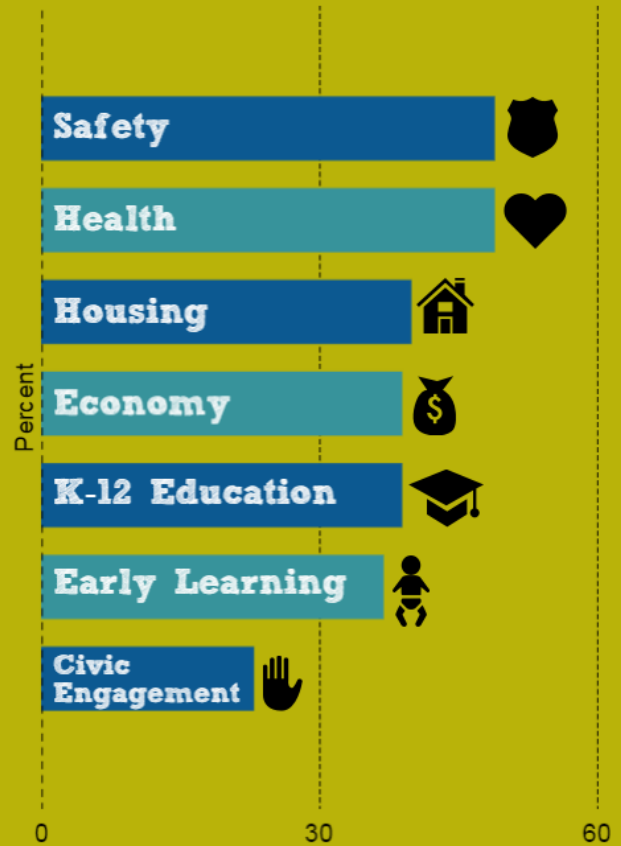
"More diversity training to the staff in the schools"

We asked adults and youth: What should community organizations focus on to improve White Center?

Adult Priorities



Youth Priorities



What's next?



The White Center CDA and its partners will turn these ideas into...



...strategies, organizing, and advocacy...



...to help White Center thrive!

Contact us for more information



White Center CDA

605 SW 108th St
Seattle, WA 98146
www.wccda.org
206-694-1082

May 2016